

## WELSH INFORMATION STANDARDS BOARD

<b>DSC Notice:</b>	DSCN 2021 / 26
<b>Date of Issue:</b>	24 <sup>th</sup> November 2021

<b>Welsh Health Circular/Official Letter:</b> None	<b>Subject:</b> Cardiac and Cardiology Component Waits
<b>Sponsor:</b> Olivia Shorrocks, Head of Major Conditions (Performance), Welsh Government	
<b>Implementation Date:</b> PILOT: 1 <sup>st</sup> November 2021 to 30 <sup>th</sup> April 2022. First return 30 <sup>th</sup> December 2021 (census snapshot at 30 <sup>th</sup> November 2021)	

### DATA STANDARDS CHANGE NOTICE

A Data Standards Change Notice (DSCN) is an information mandate for a new or revised information standard.

This DSCN was approved by the Welsh Information Standards Board (WISB) at its meeting 18<sup>th</sup> November 2021.

**WISB Reference:** ISRN 2020 / 035

#### Summary:

To introduce an aggregate data collection to support waiting list management for cardiac and cardiology patients.

#### Data sets / returns affected:

None – new standard

Please address enquiries about this Data Standards Change Notice to the Data Standards Team in Digital Health and Care Wales

E-mail: [data.standards@wales.nhs.uk](mailto:data.standards@wales.nhs.uk) / Tel: 029 2050 2539

The Welsh Information Standards Board is responsible for appraising information standards. Submission documents and WISB Outcomes relating to the approval of this standard can be found at:

<http://howis.wales.nhs.uk/sites3/page.cfm?orgid=742&pid=24632>

## DATA STANDARDS CHANGE NOTICE

### Introduction

Work has been ongoing to implement a new approach to support cardiac patients to ensure those most at risk are seen as quickly as possible. As part of that approach there is a requirement to capture and report the stages in a patient's journey indicating two main pathway milestones:

- Decision to Treat. This stage also includes any other clock stop event following referral into secondary care and prior to Decision to Treat.
- Elective Treatment Undertaken. This stage also includes any other clock stop event following Decision to Treat but prior to Elective Treatment Undertaken.

### Description of Change

To introduce an aggregate data collection to support waiting list management for cardiac and cardiology patients. This will provide the information required to evaluate against targets set by Welsh Government.

### Data Dictionary Version

Where applicable, this DSCN reflects changes introduced by DSCN and/or DDCN since the release of version 4.14 of the NHS Wales Data Dictionary.

The changes introduced by such DSCNs will be published in version 4.15 of the NHS Wales Data Dictionary.

### Actions Required

Local Health Boards / Trusts:

- Ensure that local processes and system updates are in place to meet the updated reporting requirements as described in this DSCN.

Welsh Government Delivery & Performance Division:

- On an annual basis, make the form available to health boards to complete, and notify them of the deadline for the submission of data.

**Appendix A: Table reflecting areas that are impacted as a result of this DSCN**

The following table shows where there are changes to the scope and/or definitions of applicable data sets, data items, terms and other associated areas that are linked with the changes documented within this DSCN.

Each data definition type is listed in alphabetical order and is shown in the sequence in which it appears in this DSCN.

<b>Data Definition Type</b>	<b>Name</b>	<b>New/Retired/ Changed</b>	<b>Page Number</b>
Aggregate Proforma	Cardiac and Cardiology Component Waits	New	4

## **Appendix B: Highlighted changes to be made to the NHS Wales Data Dictionary**

Changes to the NHS Wales Data Dictionary are detailed below, with new text being highlighted in **blue** and deletions are shown with a ~~strikethrough~~. The text shaded in **grey** shows existing text copied from the NHS Wales Data Dictionary.

---

### **Cardiac and Cardiology Component Waits Data Collection**

#### **Return Submission Details**

Health boards **in Wales** to provide one completed template per month including both waiting times and activity data as per the proforma.

Health boards are required to report on the 20<sup>th</sup> working day of the month following the last day of the previous month (dates provided on the Guidance - General sheet of the pro forma) and submit to the Welsh Government Delivery & Performance Division:

[HSS.Performance@gov.wales](mailto:HSS.Performance@gov.wales)

Accountability for reporting should follow Consolidated Rules for Managing Cardiac Referral To Treatment Waiting Times – March 2018 (see [http://howis.wales.nhs.uk/doclib/Welsh%20Health%20Circular%202018%20018%20Consolidated%20Rules%20for%20Managing%20Cardiac%20Referral%20Traetment%20Waiting%20Times%20-%20March%202018%20\(English\).pdf](http://howis.wales.nhs.uk/doclib/Welsh%20Health%20Circular%202018%20018%20Consolidated%20Rules%20for%20Managing%20Cardiac%20Referral%20Traetment%20Waiting%20Times%20-%20March%202018%20(English).pdf)) unless otherwise indicated.

The latest version of each form is available on the Welsh Government's Performance Management Website:

<http://howis.wales.nhs.uk/sitesplus/407/home>

Any further queries regarding the data collection forms should be directed to the Delivery & Performance Division, Welsh Government, on 03000 258871, or e-mail via [HSS.Performance@gov.wales](mailto:HSS.Performance@gov.wales).

---

## Information Requirements from November 2021

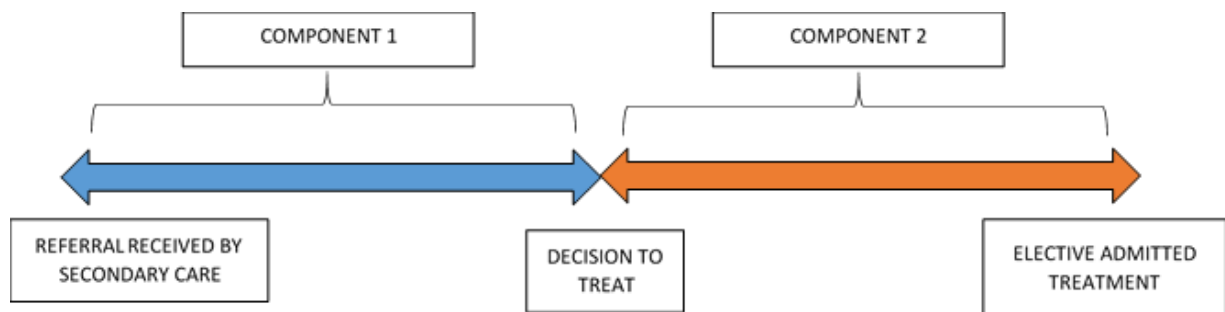
### Definitions: General Guidance and Scope

- Health boards **in Wales** to provide information. Accountability for reporting follows Consolidated Rules for Managing Cardiac Referral To Treatment Waiting Times – March 2018 (see [http://howis.wales.nhs.uk/doclib/Welsh%20Health%20Circular%202018%20018%20Consolidated%20Rules%20for%20Managing%20Cardiac%20Referral%20Treatment%20Waiting%20Times%20-%20March%202018%20\(English\).pdf](http://howis.wales.nhs.uk/doclib/Welsh%20Health%20Circular%202018%20018%20Consolidated%20Rules%20for%20Managing%20Cardiac%20Referral%20Treatment%20Waiting%20Times%20-%20March%202018%20(English).pdf)) unless otherwise indicated. This is as follows:
  - The Welsh health board with clinical responsibility for the patient at the reporting census date is responsible for reporting the Open Pathways metrics.
  - The Welsh health board with clinical responsibility for the patient at any clock stop event is responsible for reporting the Clock Stop metrics.
  - When NHS activity is commissioned from an independent sector provider, the Welsh health board commissioning the pathway is responsible for reporting the respective metrics.
  - When a referral is made to an English provider, for the purposes of this data collection, this will be treated as a clock stop event and be reported as such by the Welsh health board with clinical responsibility at that reporting point.
- When patient care transfers between organisations the **clock does not stop**, and it is the responsibility of the transferring organisation to provide the correct pathway start date. Detailed guidance for reporting and clock stop events is given in the Consolidated Rules for Managing Cardiac Referral To Treatment Waiting Times – March 2018 (see [http://howis.wales.nhs.uk/doclib/Welsh%20Health%20Circular%202018%20018%20Consolidated%20Rules%20for%20Managing%20Cardiac%20Referral%20Treatment%20Waiting%20Times%20-%20March%202018%20\(English\).pdf](http://howis.wales.nhs.uk/doclib/Welsh%20Health%20Circular%202018%20018%20Consolidated%20Rules%20for%20Managing%20Cardiac%20Referral%20Treatment%20Waiting%20Times%20-%20March%202018%20(English).pdf)).
- Health boards are required to report on the 20<sup>th</sup> working day of the month following the last day of the previous month (dates provided on the Guidance - General sheet of the pro forma).
- The information required relates to all new cardiac and cardiology referrals for **actual and relative** pathways for adults and paediatric patients (i.e., Main Specialties 170 - Cardiothoracic Surgery, 320 - Cardiology, 321 - Paediatric Cardiology) (see <http://www.datadictionary.wales.nhs.uk/#!/WordDocuments/mainspecialtyconsultant.htm>). **It excludes** rehabilitation (i.e., Treatment Function Code 327 - Cardiac Rehabilitation).
  - **Actual** refers to the 'real' patient wait for the respective component with no amendments to any dates due to e.g., resets from CNAs / DNAs, adjustments due to patients being unavailable etc.
  - **Relative** refers to the wait for the respective component taking into account any amendments to dates, irrespective of the reason as to why the amendment has been made e.g., resets from CNAs, DNAs, adjustments (both patient and health board related) etc.
- All sources of referral should be included.
- Both face to face and virtual appointments should be included.
- Component 2 treatment figures are defined as **elective admitted treatments** only (i.e. Admission Method 11 - Waiting List, 12 - Booked, 13 - Planned) (see [www.datadictionary.wales.nhs.uk/#!/WordDocuments/admissionmethod.htm](http://www.datadictionary.wales.nhs.uk/#!/WordDocuments/admissionmethod.htm)). Types of treatment include (**this is not an exhaustive list**):
  - Revascularisation (Angioplasty (Percutaneous Coronary Intervention); CABG (Coronary artery bypass surgery))
  - Valve Surgery (Aortic; Mitral; Combined Aortic & Mitral)
  - Other Cardiac Surgery (Adult congenital cardiac surgery; Tumours; Other surgical procedures e.g. removal of pericardium)
  - Device and other procedural therapy (Pacemakers for heart block; Implantable defibrillators for arrhythmias; Biventricular pacemakers for heart failure; DC cardioversion for atrial fibrillation; Ablation)

- It is acknowledged that operational processes and systems differ across health boards and that information may be pulled from a variety of fields. With that in mind, to ensure consistency of approach, Component Start and Component Stop Points include reference to standards as proxies where available. In some scenarios, the Component Start may differ according to whether the health board is the original recipient of a referral or whether it has clinical responsibility because the patient was transferred. Where the Component Starts are different this will be reflected in the guidance for the respective metric.

### Definitions: Metrics

Definitions for the component metrics are given below, but the pathway can be summarised as follows:



<b>Open Pathways – Relative</b>	
<b>Metric</b>	<b>Definition</b>
<p><b>Component 1</b></p> <p><b>Referral to Decision to Treat</b></p>	<p>The number of patient pathways that are waiting for a decision to treat, following a referral into secondary care. The decision to treat is the date that the consultation between the patient and the clinician takes place and a planned treatment is agreed.</p> <p><b>Component Start Point</b>  Outpatient Waiting List Date (WLD) (see <a href="http://www.datadictionary.wales.nhs.uk/#!/WordDocuments/waitinglistdatewld.htm">http://www.datadictionary.wales.nhs.uk/#!/WordDocuments/waitinglistdatewld.htm</a>).</p> <p>The WLD will initially be the same as the Clinical Referral Date (CRD) i.e., the date the referral is received into Secondary Care. However, there are a number of situations where the WLD will change if, for example, a patient has been offered and agreed an appointment but then subsequently cancels or DNAs. The circumstances where the WLD may change can be found in the Consolidated Rules for Managing Cardiac Referral To Treatment Waiting Times – March 2018 (see <a href="http://howis.wales.nhs.uk/doclib/Welsh%20Health%20Circular%202018%20018%20Consolidated%20Rules%20for%20Managing%20Cardiac%20Referral%20Treatment%20Waiting%20Times%20-%20March%202018%20(English).pdf">http://howis.wales.nhs.uk/doclib/Welsh%20Health%20Circular%202018%20018%20Consolidated%20Rules%20for%20Managing%20Cardiac%20Referral%20Treatment%20Waiting%20Times%20-%20March%202018%20(English).pdf</a>).</p> <p>In cases where patients were transferred to another health board within this component of the pathway, the Component Start Point will also be the Outpatient Waiting List Date (WLD) to reflect any changes to the original Pathway Start Date (PSD).</p> <p><b>Component Stop Point</b>  N/A (as this is an open pathway)</p>

<p><b>Component 2</b></p>	<p><b>Decision to Treat to Elective Admitted Treatment Undertaken</b></p>	<p>The number of patient pathways that are waiting for an elective admitted treatment, following a decision to treat.</p> <p><b>Component Start Point</b> Admitted Patient Care Waiting List Date (WLD) (see <a href="http://www.datadictionary.wales.nhs.uk/#!/WordDocuments/waitinglistdatewld.htm">http://www.datadictionary.wales.nhs.uk/#!/WordDocuments/waitinglistdatewld.htm</a>).</p> <p>There are a number of situations where the WLD will change if, for example, a patient has been offered and agreed a treatment date but then subsequently cancels or DNAs. The circumstances where the WLD may change can be found in the Consolidated Rules for Managing Cardiac Referral To Treatment Waiting Times – March 2018 (see <a href="http://howis.wales.nhs.uk/doclib/Welsh%20Health%20Circular%202018%20018%20Consolidated%20Rules%20for%20Managing%20Cardiac%20Referral%20Traetment%20Waiting%20Times%20-%20March%202018%20(English).pdf">http://howis.wales.nhs.uk/doclib/Welsh%20Health%20Circular%202018%20018%20Consolidated%20Rules%20for%20Managing%20Cardiac%20Referral%20Traetment%20Waiting%20Times%20-%20March%202018%20(English).pdf</a>).</p> <p><b>Component Stop Point</b> N/A (as this is an open pathway)</p>
---------------------------	---	--



<b>Open Pathways – Actual</b>	
<b>Metric</b>	<b>Definition</b>
<b>Component 1</b>	<p><b>Referral to Decision to Treat</b></p> <p>The number of patient pathways that are waiting for a decision to treat, following a referral into secondary care. The decision to treat is the date that the consultation between the patient and the clinician takes place and a planned treatment is agreed.</p> <p><b>Component Start Point</b>  Outpatient Clinical Referral Date (CRD) (see <a href="http://www.datadictionary.wales.nhs.uk/#!/WordDocuments/clinicalreferraldate.htm">http://www.datadictionary.wales.nhs.uk/#!/WordDocuments/clinicalreferraldate.htm</a>) i.e., the date the referral is received into Secondary Care.</p> <p>In cases where patients were transferred to another health board within this component of the pathway, the Component Start Point will also be the Clinical Referral Date (CRD) i.e., the Pathway Start Date (PSD) of the original referral to the transferring organisation</p> <p><b>Component Stop Point</b>  N/A (as this is an open pathway)</p>
<b>Component 2</b>	<p><b>Decision to Treat to Elective Admitted Treatment Undertaken</b></p> <p>The number of patient pathways that are waiting for an elective admitted treatment, following a decision to treat.</p> <p><b>Component Start Point</b>  Decision to Admit Date (see <a href="http://www.datadictionary.wales.nhs.uk/#!/WordDocuments/decisiontoadmitdate.htm">http://www.datadictionary.wales.nhs.uk/#!/WordDocuments/decisiontoadmitdate.htm</a>).</p> <p><b>Component Stop Point</b>  N/A (as this is an open pathway)</p>

<b>Clock Stop - Relative</b>	
<b>Metric</b>	<b>Definition</b>
<p><b>Component 1</b></p> <p><b>Referral to Decision to Treat</b></p>	<p>The number of Component 1 patient pathways that ended during the month with a decision to treat point. The decision to treat is the date that the consultation between the patient and the clinician takes place and a planned treatment is agreed.</p> <p><b>Component Start Point</b>  Outpatient Waiting List Date (WLD) (see <a href="http://www.datadictionary.wales.nhs.uk/#!/WordDocuments/waitinglistdatewld.htm">http://www.datadictionary.wales.nhs.uk/#!/WordDocuments/waitinglistdatewld.htm</a>).</p> <p>The WLD will initially be the same as the Clinical Referral Date (CRD) i.e., the date the referral is received into Secondary Care. However, there are a number of situations where the WLD will change if, for example, a patient has been offered and agreed an appointment but then subsequently cancels or DNAs. The circumstances where the WLD may change can be found in the Consolidated Rules for Managing Cardiac Referral To Treatment Waiting Times – March 2018 (see <a href="http://howis.wales.nhs.uk/doclib/Welsh%20Health%20Circular%202018%20018%20Consolidated%20Rules%20for%20Managing%20Cardiac%20Referral%20Traetment%20Waiting%20Times%20-%20March%202018%20(English).pdf">http://howis.wales.nhs.uk/doclib/Welsh%20Health%20Circular%202018%20018%20Consolidated%20Rules%20for%20Managing%20Cardiac%20Referral%20Traetment%20Waiting%20Times%20-%20March%202018%20(English).pdf</a>).</p> <p>In cases where patients were transferred to another health board within this component of the pathway, the Component Start Point will also be the Outpatient Waiting List Date (WLD) to reflect any changes to the original Pathway Start Date (PSD).</p> <p><b>Component Stop Point</b>  Admitted Patient Care Waiting List Date (WLD) (see <a href="http://www.datadictionary.wales.nhs.uk/#!/WordDocuments/waitinglistdatewld.htm">http://www.datadictionary.wales.nhs.uk/#!/WordDocuments/waitinglistdatewld.htm</a>).</p>

<p><b>Component 1</b></p>	<p><b>Referral to Death of Patient</b></p>	<p>The number of Component 1 patient pathways that ended during the month with a patient death.</p> <p><b>Component Start Point</b>  Outpatient Waiting List Date (WLD) (see <a href="http://www.datadictionary.wales.nhs.uk/#!/WordDocuments/waitinglistdatewld.htm">http://www.datadictionary.wales.nhs.uk/#!/WordDocuments/waitinglistdatewld.htm</a>).</p> <p>The WLD will initially be the same as the Clinical Referral Date (CRD) i.e., the date the referral is received into Secondary Care. However, there are a number of situations where the WLD will change if, for example, a patient has been offered and agreed an appointment but then subsequently cancels or DNAs. The circumstances where the WLD may change can be found in the Consolidated Rules for Managing Cardiac Referral To Treatment Waiting Times – March 2018 (see <a href="http://howis.wales.nhs.uk/doclib/Welsh%20Health%20Circular%202018%20018%20Consolidated%20Rules%20for%20Managing%20Cardiac%20Referral%20Traetment%20Waiting%20Times%20-%20March%202018%20(English).pdf">http://howis.wales.nhs.uk/doclib/Welsh%20Health%20Circular%202018%20018%20Consolidated%20Rules%20for%20Managing%20Cardiac%20Referral%20Traetment%20Waiting%20Times%20-%20March%202018%20(English).pdf</a>).</p> <p>In cases where patients were transferred to another health board within this component of the pathway, the Component Start Point will also be the Outpatient Waiting List Date (WLD) to reflect any changes to the original Pathway Start Date (PSD).</p> <p><b>Component Stop Point</b>  The date of the patient's death</p>
---------------------------	--	--

<p><b>Component 1</b></p>	<p><b>Referral to Any Other Clock Stop Event</b></p>	<p>The number of Component 1 patient pathways that ended during the month with a clock stop event other than decision to treat or death of patient.</p> <p><b>Component Start Point</b>  Outpatient Waiting List Date (WLD) (see <a href="http://www.datadictionary.wales.nhs.uk/#!/WordDocuments/waitinglistdatewld.htm">http://www.datadictionary.wales.nhs.uk/#!/WordDocuments/waitinglistdatewld.htm</a>).</p> <p>The WLD will initially be the same as the Clinical Referral Date (CRD) i.e., the date the referral is received into Secondary Care. However, there are a number of situations where the WLD will change if, for example, a patient has been offered and agreed an appointment but then subsequently cancels or DNAs. The circumstances where the WLD may change can be found in the Consolidated Rules for Managing Cardiac Referral To Treatment Waiting Times – March 2018 (see <a href="http://howis.wales.nhs.uk/doclib/Welsh%20Health%20Circular%202018%20018%20Consolidated%20Rules%20for%20Managing%20Cardiac%20Referral%20Traetment%20Waiting%20Times%20-%20March%202018%20(English).pdf">http://howis.wales.nhs.uk/doclib/Welsh%20Health%20Circular%202018%20018%20Consolidated%20Rules%20for%20Managing%20Cardiac%20Referral%20Traetment%20Waiting%20Times%20-%20March%202018%20(English).pdf</a>).</p> <p>In cases where patients were transferred to another health board within this component of the pathway, the Component Start Point will also be the Outpatient Waiting List Date (WLD) to reflect any changes to the original Pathway Start Date (PSD).</p> <p><b>Component Stop Point</b>  The date of any other clock stop event during the month other than decision to treat or death of patient e.g., decision not to treat, active monitoring, patients elect to have private care etc. For WelshPAS users see (<a href="#">Cardiac and Cardiology Component Waits - Supporting Guidance</a>) for a list of possible outcome codes.</p>
---------------------------	--	--

<p><b>Component 2</b></p>	<p><b>Decision to Treat to Elective Admitted Treatment Undertaken</b></p>	<p>The number of Component 2 patient pathways that ended during the month with the patients having received elective admitted treatment.</p> <p><b>Component Start Point</b> Admitted Patient Care Waiting List Date (WLD) (see <a href="http://www.datadictionary.wales.nhs.uk/#!WordDocuments/waitinglistdatewld.htm">http://www.datadictionary.wales.nhs.uk/#!WordDocuments/waitinglistdatewld.htm</a>).</p> <p>There are a number of situations where the WLD will change if, for example, a patient has been offered and agreed a treatment date but then subsequently cancels or DNAs. The circumstances where the WLD may change can be found in the Consolidated Rules for Managing Cardiac Referral To Treatment Waiting Times – March 2018 (see <a href="http://howis.wales.nhs.uk/doclib/Welsh%20Health%20Circular%202018%20018%20Consolidated%20Rules%20for%20Managing%20Cardiac%20Referral%20Traetment%20Waiting%20Times%20-%20March%202018%20(English).pdf">http://howis.wales.nhs.uk/doclib/Welsh%20Health%20Circular%202018%20018%20Consolidated%20Rules%20for%20Managing%20Cardiac%20Referral%20Traetment%20Waiting%20Times%20-%20March%202018%20(English).pdf</a>).</p> <p><b>Component Stop Point</b> Start Date of Provider Spell (see <a href="http://www.datadictionary.wales.nhs.uk/#!WordDocuments/startdateofproviderspell.htm">http://www.datadictionary.wales.nhs.uk/#!WordDocuments/startdateofproviderspell.htm</a>).</p> <p><b>Note:</b> The Start Date of Provider spell may not be the same as the date the patient actually received treatment.</p>
---------------------------	---	--

<p><b>Component 2</b></p>	<p><b>Decision to Treat to Death of Patient</b></p>	<p>The number of Component 2 patient pathways that ended during the month with a patient death.</p> <p><b>Component Start Point</b>  Admitted Patient Care Waiting List Date (WLD) (see <a href="http://www.datadictionary.wales.nhs.uk/#!/WordDocuments/waitinglistdatewld.htm">http://www.datadictionary.wales.nhs.uk/#!/WordDocuments/waitinglistdatewld.htm</a>).</p> <p>There are a number of situations where the WLD will change if, for example, a patient has been offered and agreed a treatment date but then subsequently cancels or DNAs. The circumstances where the WLD may change can be found in the Consolidated Rules for Managing Cardiac Referral To Treatment Waiting Times – March 2018 (see <a href="http://howis.wales.nhs.uk/doclib/Welsh%20Health%20Circular%202018%20018%20Consolidated%20Rules%20for%20Managing%20Cardiac%20Referral%20Traetment%20Waiting%20Times%20-%20March%202018%20(English).pdf">http://howis.wales.nhs.uk/doclib/Welsh%20Health%20Circular%202018%20018%20Consolidated%20Rules%20for%20Managing%20Cardiac%20Referral%20Traetment%20Waiting%20Times%20-%20March%202018%20(English).pdf</a>).</p> <p><b>Component Stop Point</b>  The date of the patient's death</p>
---------------------------	---	---

<p><b>Component 2</b></p>	<p><b>Decision to Treat to Any Other Clock Stop Event</b></p>	<p>The number of Component 2 patient pathways that ended during the month with a clock stop event other than elective admitted treatment undertaken or death of patient.</p> <p><b>Component Start Point</b> Admitted Patient Care Waiting List Date (WLD) (see <a href="http://www.datadictionary.wales.nhs.uk/#!/WordDocuments/waitinglistdatewld.htm">http://www.datadictionary.wales.nhs.uk/#!/WordDocuments/waitinglistdatewld.htm</a>).</p> <p>There are a number of situations where the WLD will change if, for example, a patient has been offered and agreed a treatment date but then subsequently cancels or DNAs. The circumstances where the WLD may change can be found in the Consolidated Rules for Managing Cardiac Referral To Treatment Waiting Times – March 2018 (see <a href="http://howis.wales.nhs.uk/doclib/Welsh%20Health%20Circular%202018%20018%20Consolidated%20Rules%20for%20Managing%20Cardiac%20Referral%20Traetment%20Waiting%20Times%20-%20March%202018%20(English).pdf">http://howis.wales.nhs.uk/doclib/Welsh%20Health%20Circular%202018%20018%20Consolidated%20Rules%20for%20Managing%20Cardiac%20Referral%20Traetment%20Waiting%20Times%20-%20March%202018%20(English).pdf</a>).</p> <p><b>Component Stop Point</b> The date of any other clock stop event during the month other than elective admitted treatment undertaken or death of patient e.g., emergency treatment, patients elect to have private care etc. For WelshPAS users see (<a href="#">Cardiac and Cardiology Component Waits - Supporting Guidance</a>) for a list of possible outcome codes.</p>
---------------------------	---	--

		<b>Clock Stop - Actual</b>
	<b>Metric</b>	<b>Definition</b>
<b>Component 1</b>	<b>Referral to Decision to Treat</b>	<p>The number of Component 1 patient pathways that ended during the month with a decision to treat point. The decision to treat is the date that the consultation between the patient and the clinician takes place and a planned treatment is agreed.</p> <p><b>Component Start Point</b>  Outpatient Clinical Referral Date (CRD) (see <a href="http://www.datadictionary.wales.nhs.uk/#!WordDocuments/clinicalreferraldate.htm">http://www.datadictionary.wales.nhs.uk/#!WordDocuments/clinicalreferraldate.htm</a>) i.e., the date the referral is received into Secondary Care.</p> <p>In cases where patients were transferred to another health board within this component of the pathway, the Component Start Point will also be the Clinical Referral Date (CRD) i.e., the Pathway Start Date (PSD) of the original referral to the transferring organisation</p> <p><b>Component Stop Point</b>  Decision to Admit Date (see <a href="http://www.datadictionary.wales.nhs.uk/#!WordDocuments/decisiontoadmitdate.htm">http://www.datadictionary.wales.nhs.uk/#!WordDocuments/decisiontoadmitdate.htm</a>)</p>
<b>Component 1</b>	<b>Referral to Death of Patient</b>	<p>The number of Component 1 patient pathways that ended during the month with a patient death.</p> <p><b>Component Start Point</b>  Outpatient Clinical Referral Date (CRD) (see <a href="http://www.datadictionary.wales.nhs.uk/#!WordDocuments/clinicalreferraldate.htm">http://www.datadictionary.wales.nhs.uk/#!WordDocuments/clinicalreferraldate.htm</a>) i.e., the date the referral is received into Secondary Care.</p> <p>In cases where patients were transferred to another health board within this component of the pathway, the Component Start Point will also be the Clinical Referral Date (CRD) i.e., the Pathway Start Date (PSD) of the original referral to the transferring organisation</p> <p><b>Component Stop Point</b>  The date of the patient's death</p>



<p><b>Component 1</b></p>	<p><b>Referral to Any Other Clock Stop Event</b></p>	<p>The number of Component 1 patient pathways that ended during the month with a clock stop event other than decision to treat or death of patient.</p> <p><b>Component Start Point</b>  Outpatient Clinical Referral Date (CRD) (see <a href="http://www.datadictionary.wales.nhs.uk/#!WordDocuments/clinicalreferraldate.htm">http://www.datadictionary.wales.nhs.uk/#!WordDocuments/clinicalreferraldate.htm</a>) i.e., the date the referral is received into Secondary Care.</p> <p>In cases where patients were transferred to another health board within this component of the pathway, the Component Start Point will also be the Clinical Referral Date (CRD) i.e., the Pathway Start Date (PSD) of the original referral to the transferring organisation</p> <p><b>Component Stop Point</b>  The date of any other clock stop event during the month other than decision to treat or death of patient e.g., decision not to treat, active monitoring, patients elect to have private care etc. For WelshPAS users see (<a href="#">Cardiac and Cardiology Component Waits - Supporting Guidance</a>) for a list of possible outcome codes.</p>
<p><b>Component 2</b></p>	<p><b>Decision to Treat to Elective Admitted Treatment Undertaken</b></p>	<p>The number of Component 2 patient pathways that ended during the month with the patients having received elective admitted treatment.</p> <p><b>Component Start Point</b>  Decision to Admit Date (see <a href="http://www.datadictionary.wales.nhs.uk/#!WordDocuments/decisiontoadmitdate.htm">http://www.datadictionary.wales.nhs.uk/#!WordDocuments/decisiontoadmitdate.htm</a>).</p> <p><b>Component Stop Point</b>  Start Date of Provider Spell (see <a href="http://www.datadictionary.wales.nhs.uk/#!WordDocuments/startdateofproviderspell.htm">http://www.datadictionary.wales.nhs.uk/#!WordDocuments/startdateofproviderspell.htm</a>).</p> <p><b>Note:</b> The Start Date of Provider spell may not be the same as the date the patient actually received treatment</p>

<p><b>Component 2</b></p>	<p><b>Decision to Treat to Death of Patient</b></p>	<p>The number of Component 2 patient pathways that ended during the month with a patient death.</p> <p><b>Component Start Point</b> Decision to Admit Date (see <a href="http://www.datadictionary.wales.nhs.uk/#!WordDocuments/decisiontoadmitdate.htm">http://www.datadictionary.wales.nhs.uk/#!WordDocuments/decisiontoadmitdate.htm</a>).</p> <p><b>Component Stop Point</b> The date of the patient's death</p>
<p><b>Component 2</b></p>	<p><b>Decision to Treat to Any Other Clock Stop Event</b></p>	<p>The number of Component 2 patient pathways that ended during the month with a clock stop event other than elective admitted treatment undertaken or death of patient.</p> <p><b>Component Start Point</b> Decision to Admit Date (see <a href="http://www.datadictionary.wales.nhs.uk/#!WordDocuments/decisiontoadmitdate.htm">http://www.datadictionary.wales.nhs.uk/#!WordDocuments/decisiontoadmitdate.htm</a>).</p> <p><b>Component Stop Point</b> The date of any other clock stop event during the month other than elective admitted treatment undertaken or death of patient e.g., emergency treatment, patients elect to have private care etc. For WelshPAS users see (<a href="#">Cardiac and Cardiology Component Waits - Supporting Guidance</a>) for a list of possible outcome codes.</p>