

## HEADLINE FIGURES

### PEDW Statistics - Data for the period 1st April 2020 to 31st March 2021

#### NHS Hospital Admitted Patients – Hywel Dda University Health Board Provider.

### Summary

The annual PEDW data tables present analyses of the Patient Episode Database for Wales (PEDW) which is collated, validated, and stored by Digital Health and Care Wales (DHCW) on behalf of the Welsh Government and the NHS in Wales. It is a rich source of information about patients admitted to hospitals in Wales. Data is based on 'Finished Consultant Episodes' (FCEs). Episodes describe the time a patient spends in the continuous care of one consultant within a provider spell. A provider spell is the continuous period of time that a patient spends in the care of one NHS health care provider (Local Health Board). The care starts with an admission episode and ends in discharge, transfer to another NHS provider or death. When the responsibility for a patient transfers from one consultant to another within a provider spell, one consultant episode will end and another one begins. However, in approximately 90% of cases, the provider spell consists of just one consultant episode.

### Key Facts<sup>1</sup>

COVID-19 has greatly impacted Admitted Patient Care in 2020/21, admissions across all areas have reduced, please see below for details:

#### In 2020/21:

- There were 77,600 Finished Consultant Episodes (FCEs) recorded in 2020-21. This is a decrease of 36% (42,600) on the previous year, and a 34% decrease on the average of the previous five years.
- Of these episodes, 65,100 were admission episodes (the first in a spell), again, this is a large decrease of 38% on the previous year.
- 55% (35,900) of all admissions were emergencies, a decrease of 21% on 2019-20.
- Emergency admissions now make up the majority of admissions for Hywel Dda University Health Board, accounting for 55% of all admissions.
- 22,600 admissions were from waiting lists (including booked admissions), a decrease of 56% on 2019-20.
- 73% (56,500) of all FCEs were ordinary inpatient episodes, 27% (21,200) were day case episodes.
- 50% of all episodes (91% of day case episodes) involved some form of procedure or intervention.
- 500 admissions (1%) were from patients not normally resident within Wales.

---

<sup>1</sup> Figures in the Key Facts have been rounded to the nearest hundred. Percentage calculations are based on the un-rounded figures.

## Data Quality

**Primary diagnosis coding completeness:** This data was extracted from the PEDW database in November 2021. The clinical coding section of the APC Data Quality Status report advises that three organisations (BCUHB, Powys and Swansea) met both clinical coding completeness targets while another three organisations (Aneurin Bevan, Cwm Taf and Hywel Dda) failed to meet either of them. Aneurin Bevan (92.8%), Cwm Taf (89.1%) and Hywel Dda (85.9%) failed to achieve the national standard of 95% coded within 3 months of episode end date, while Aneurin Bevan (92.8%), Cardiff & Vale (96.8%), Cwm Taf (89.1%), Hywel Dda (85.9%) and Velindre (97.6%) failed to achieve the 98% target for rolling 12 months' data.

**Treatment specialty re-coding:** From April 2016, new codes were introduced for describing specialties to add more detail to data collections. Currently, not all health boards are reporting this data consistently using the more detailed codes. For this publication, treatment specialties have been recoded as their previous description to avoid inconsistent reporting.

## Publication Links

- PEDW Data on-line [Notes and definitions](#)
- [2020/21 Data Quality Report](#)
- [NHS Wales Data Dictionary](#)

## Trends

Charts 1 and 2 have been included to provide an indication of the trend for some of the key facts noted above (2016-17 to 2020-21). Data for years other than the latest year have been taken from previous publications.

**Chart 1: Number of FCEs and admission episodes 2016-17 to 2020-21**

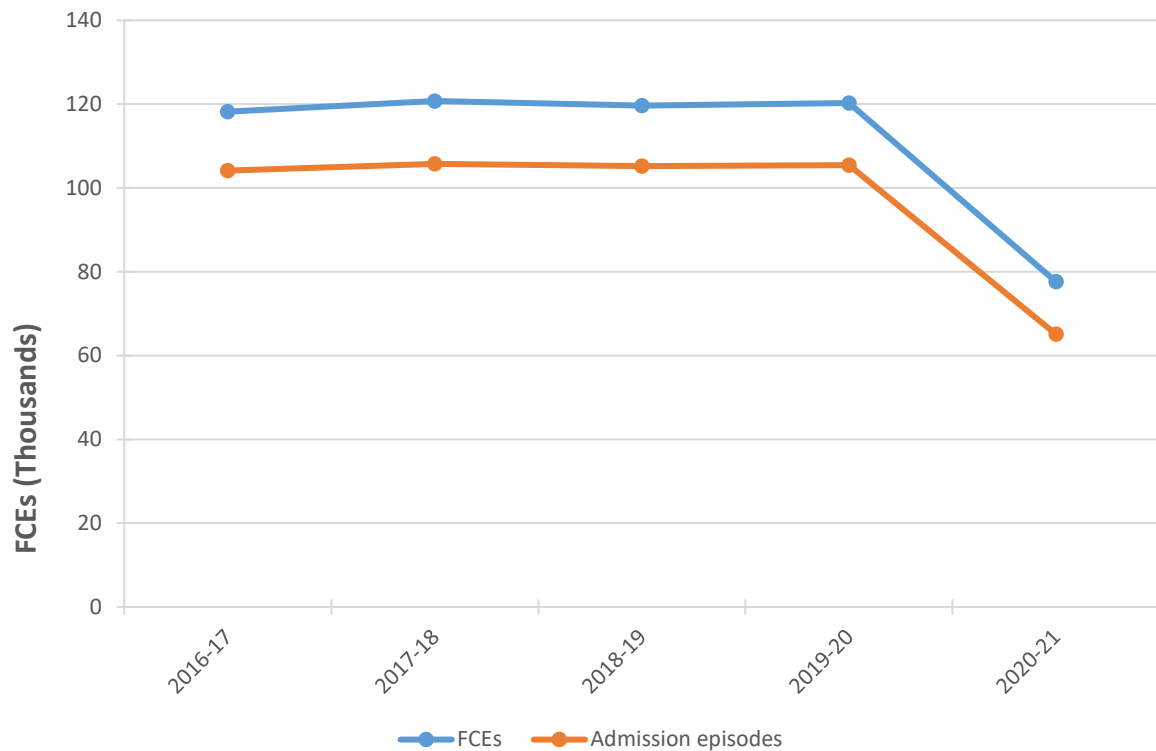


Chart 1 shows the volume of episodes and admission episodes each year. Admission episodes are the first episode within a spell of care. FCEs and admissions experienced similar percentage decreases, FCEs declined by 36% and admission episodes by 38% on the previous year.

**Chart 2: Number of admission episodes by admission method 2016-17 to 2020-21**

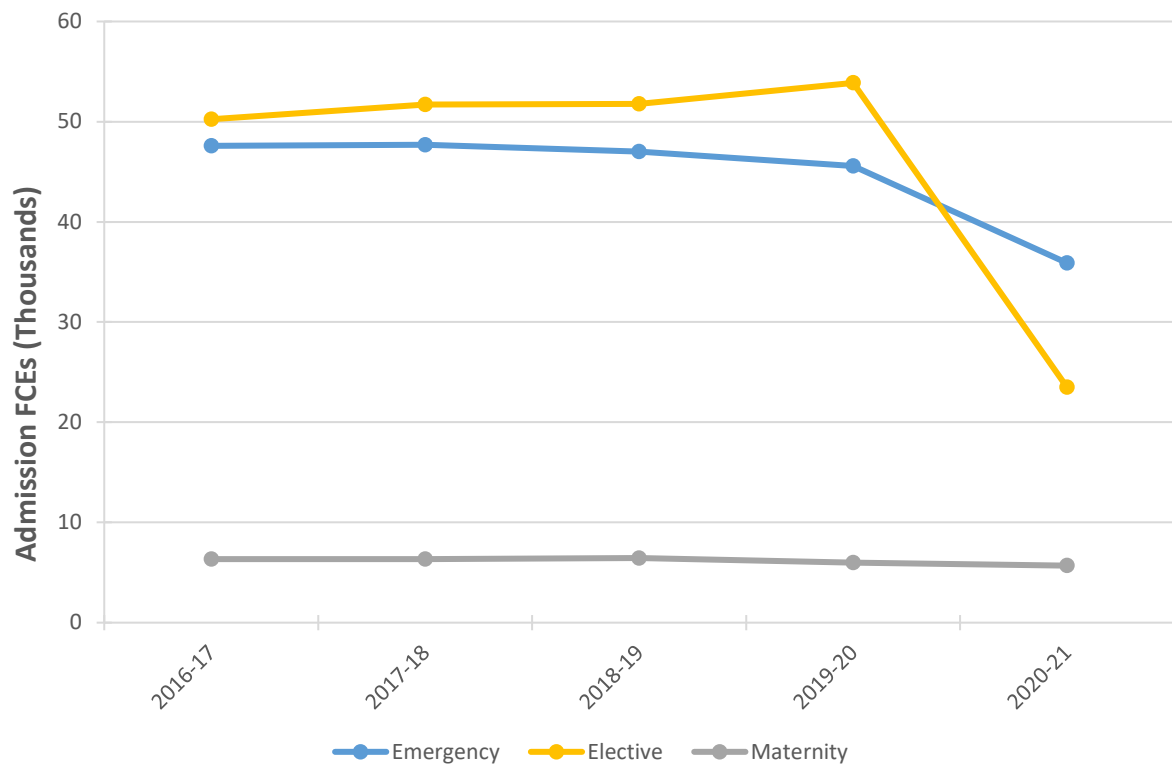


Chart 2 shows the volume of admission episodes split by admission method over time. Elective admissions saw a higher decline than emergency admissions in 2020-21; elective admissions declined by 56% compared to 21% for emergency admissions. Emergency admissions account for 55% of all admissions in Hywel Dda University Health Board. Maternity admissions continued to decline, however at a lesser extent than in 2019-20; maternity admissions declined by 7% in 2019-20 and 5% in 2020-21.

## HEADLINE FIGURES

PEDW Statistics - Data for the period 1st April 2020 to 31st March 2021

NHS Hospital Admitted Patients - Hywel Dda University Health Board Provider

### Finished Consultant Episodes - FCEs (excl. Regular Attender episodes )

<b>Total</b>	<b>77,611</b>	<b>100.0%</b>
Proportion of the above episodes with a procedure or intervention:	50.3%	

### FCEs by Patient Classification

<b>Inpatient FCEs</b>	<b>56,459</b>	<b>72.7%</b>
Proportion of the above episodes with a procedure or intervention:	35.0%	
<b>Day Case FCEs</b>	<b>21,152</b>	<b>27.3%</b>
Proportion of the above episodes with a procedure or intervention:	90.9%	
<b>Mothers Using Delivery Facilities Only: FCEs</b>	<b>-</b>	<b>0.0%</b>
<b>Patient Classification Unknown: FCEs</b>	<b>0</b>	<b>0.0%</b>

### FCEs by Patients' Age

0 - 4	3,130	4.0%
5 - 14	2,015	2.6%
15 - 24	3,740	4.8%
25 - 44	10,934	14.1%
45 - 64	14,774	19.0%
65 - 74	15,394	19.8%
75 - 84	17,057	22.0%
85 & Over	10,565	13.6%
Not known	2	0.0%

### FCEs and Average Bed days by Broad Specialty Groups (the specialty under which the patient is treated<sup>1</sup>)

	<b>FCEs</b>	<b>Bed days</b>
<b>All Specialties</b>	<b>56,459</b>	<b>5.5</b>
All Non-Psychiatric Specialties Excluding Geriatrics	54,610	4.5
All Non-Psychiatric Specialties	55,579	4.7
All Psychiatric Specialties	873	52.6
Acute	48,303	5.0
Maternity	6,307	1.1
Geriatrics	969	16.2
Mental Illness	866	45.7
Learning Disability	7	907.7

### Private Patients Treated in NHS Hospitals

FCEs (all patient classifications)	1	0.0%
------------------------------------	---	------

### Delivery Episodes<sup>2</sup>

FCEs: Mothers giving birth (all patient classifications)	2,150	2.8%
--	-------	------

### FCEs in Spell Breakdown

1 episode only	85.7%
2 episodes	11.2%
3 episodes	2.1%
4 or more episodes	1.0%

#### Admission Episodes (only the first episode of care in each hospital stay is counted).

<b>Total</b>			<b>65,072</b>	<b>100.0%</b>
	Inpatient	Daycase		
<b>Elective admission episodes</b>	2,342	21,146	<b>23,488</b>	<b>36.1%</b>
Waiting List	2,233	19,790	22,023	
Booked	46	562	608	
Planned	63	794	857	
Other Elective Admissions (transfers)	-	0	0	
<b>Emergency admission episodes</b>			<b>35,893</b>	<b>55.2%</b>
A&E			23,113	
GP			3,137	
Other Emergency			9,643	
<b>Other admission episodes (including maternity)</b>			<b>5,691</b>	<b>8.7%</b>

#### Discharge Episodes (only the last episode of care in each hospital stay is counted)

<b>Total</b>	<b>64,921</b>	<b>100.0%</b>
Deaths in hospital (including stillbirths)	2,013	3.1%

#### Discharge Episodes (inpatients only) and Average Length of Stay by Broad Specialty Groups (the specialty under which the patient is treated<sup>1</sup>)

	Elective		Emergency		Other <sup>3</sup>		All Admissions	
	FCEs	LOS	FCEs	LOS	FCEs	LOS	FCEs	LOS
<b>All Specialties</b>	<b>2,341</b>	<b>3.1</b>	<b>35,744</b>	<b>8.3</b>	<b>5,690</b>	<b>1.2</b>	<b>43,775</b>	<b>7.1</b>
All Non-Psych Spec. excl. Geriatrics	2,341	3.1	34,184	6.8	5,689	1.1	42,214	5.8
All Non-Psychiatric	2,341	3.1	35,008	7.1	5,690	1.2	43,039	6.1
All Psychiatric Specialties	0	-	729	64.5	0	-	729	64.5
Acute	1,919	3.5	34,042	6.8	13	6.8	35,974	6.6
Maternity	422	1.3	142	1.2	5,676	1.1	6,240	1.1
Geriatrics	0	-	824	21.7	1	**	825	21.7
Mental Illness	0	-	723	56.3	0	-	723	56.3
Learning Disability	0	-	6	**	0	-	6	**

#### Non-Welsh Residents Treated in Hywel Dda ULHB

FCEs	583	0.8%
Admission Episodes	485	0.7%

#### \*Regular Day and Night Attender Episodes (these episodes have not been included elsewhere)

<b>Total</b>	<b>9,594</b>
--------------	--------------

[1] In publications prior to 2012/13, the consultants main specialty was used for all specialty figures in the headlines publication. From 2012/13, to comply with current best practice and to match other publications, this was changed to the specialty under which the patient was treated. This means that specialty figures prior to 2012/13 will not be comparable to specialty figures provided for 2012/13 onwards in the headlines publication. Please refer to the NHS Wales data dictionary <http://www.datadictionary.wales.nhs.uk> for definitions.

[2] Please note that the definition for delivery episodes changed from the 2012/13 publication onwards, therefore the data will not be comparable to previous years. Please see the Notes and Definitions document accompanying this release for further information.

[3] Other refers to any other type of admission method other than elective or emergency (includes maternity admissions).

Please note percentage breakdowns may not always add up due to rounding.

\*\*Calculated values such as average length of stay or average beddays are not provided where based on less than 10 values

	Finished Episodes	Admissions	Male	Female	Emerg	Waiting List	Waiting Time		Length of Stay		Mean Age	Inpatient	Day Case
							Mean	Median	Mean	Median			
<b>Procedures (main)</b>													
Cataract	298	298	47%	53%	0%	100%	220.3	210.0	0.8	1.0	73	2%	98%
Upper digestive tract	1,943	1,441	53%	47%	20%	80%	37.7	16.5	11.4	5.0	65	42%	58%
Heart (CABG)	-	-	-	-	-	-	-	-	-	-	-	-	-
Heart (PTCA)	1	-	-	-	-	-	**	**	**	**	**	-	-
Hip	326	310	29%	71%	91%	9%	322.1	358.0	15.4	10.0	80	100%	0%
Knee	14	13	36%	64%	31%	69%	**	**	18.1	3.0	70	100%	0%
Kidney transplant	-	-	-	-	-	-	-	-	-	-	-	-	-
<b>Diagnosis (anywhere in admitting episode)</b>													
Sepsis	2,041	1,154	55%	45%	96%	3%	45.1	0.0	14.8	8.0	71	99%	1%

**Notes**

\*\* Figures have been suppressed due to low numbers

Percentages have been rounded to nearest whole number

**Procedures (codes are from the OPCS Classification of Interventions and Procedures Version 4.7)**

1. Cataract: Extraction and prosthesis of lens (C71 - C75)
2. Upper Digestive Tract: Includes operations on oesophagus, stomach, pylorus, duodenum, jejunum and ileum (G01 - G82)
3. Heart (Coronary Artery Bypass Graft): Includes replacement of coronary artery, connection of thoracic artery to coronary artery and other methods of bypass (K40 - K46)
4. Heart (Percutaneous Transluminal operations on Coronary Artery): Includes balloon and laser angioplasty (K49, K50, K51 and K75)
5. Hip: Total prosthetic replacement of hip joint (W37 - W39), prosthetic replacement of head of femur (W46 - W48), hybrid prosthetic replacement of hip joint (W93-W95)
6. Knee: Total prosthetic replacement of knee joint (W40-W42)
7. Kidney: All transplantations of kidneys (M01)

**Diagnosis (codes are from the International Statistical Classification of Diseases and Related Health Problems (ICD10) 4th Edition, published by the WHO)**13. Sepsis: Any mention of a Sepsis diagnosis in any of the 14 diagnosis fields in the admitting episode of care. Includes:

Brucellosis (A23), Other zoonotic bacterial diseases nec (A28), Streptococcal sepsis (A40), Other sepsis (A41), Bacterial sepsis of newborn (P36), Puerperal sepsis (O85), Salmonella sepsis (A021), Shigellosis unspecified (A039), Septicaemic plague (A207), Anthrax sepsis (A227), Acute and fulminating melioidosis (A241), Erysipelothrix sepsis (A267), Listerial sepsis (A327), Tetanus neonatorum (A33X), Acute meningococcaemia (A392), Meningococcaemia unspecified (A394), Actinomycotic sepsis (A427), Other gonococcal infections which includes sepsis (A548), Genital tract and pelvic infection following abortion and ectopic and molar pregnancy (O080), Other infection during labour (O753), Systemic inflammatory response syndrome of infectious origin without organ failure (R650), Systemic inflammatory response syndrome of infectious origin with organ failure (R651), Septic Shock (R572), plus the following pairs of codes which are dagger/asterisk code pairs which must be present together: A390† Meningococcal meningitis (G01\*), A391† Waterhouse-Friderichsen syndrome (E351\*)