

HEADLINE FIGURES

PEDW Statistics - Data for the period 1st April 2018 to 31st March 2019

NHS Hospital Admitted Patients – Abertawe Bro Morgannwg University Health Board Provider.

Summary

The annual PEDW data tables present analyses of the Patient Episode Database for Wales (PEDW) which is collated, validated and stored by the NHS Wales Informatics Service (NWIS) on behalf of the Welsh Government and the NHS in Wales. It is a rich source of information about patients admitted to hospitals in Wales. Data is based on 'Finished Consultant Episodes' (FCEs). Episodes describe the time a patient spends in the continuous care of one consultant within a provider spell. A provider spell is the continuous period of time that a patient spends in the care of one NHS health care provider (Local Health Board). The care starts with an admission episode and ends in discharge, transfer to another NHS provider or death. When the responsibility for a patient transfers from one consultant to another within a provider spell, one consultant episode will end and another one begins. However, in approximately 90% of cases, the provider spell consists of just one consultant episode.

Key Facts¹

In 2018/19:

- There were 193,900 Finished Consultant Episodes (FCEs) recorded, an increase of 2.6% from the previous year and an overall increase of 4.7% over the last five years.
- Of these, 159,000 were admission episodes (the first in a spell), a 3.7% increase on the previous year and up 3% on 2014-15.
- Emergency admissions make up the majority of admissions to Abertawe Bro Morgannwg University Health Board (44.1% in 2018-19).
- There was an increase in emergency admissions this year compared to last (up 1.2%), and emergency episodes in 2018-19 are 4.3% higher than they were 5 years ago in 2014-15.
- There were 1,500 more admissions from waiting lists (including booked) this year an increase of 2.7%.
- 74% (143,400) of all FCEs were ordinary inpatient episodes, 26% (50,500) were day case episodes.
- 54% of all FCEs (94% of day case episodes) involved some form of procedure or intervention.
- Regular attender (day and night) episodes remained stable in 2018-19.

¹ Figures in the Key Facts have been rounded to the nearest hundred. Percentage calculations are based on the un-rounded figures.

Data Quality

Primary diagnosis coding completeness: This data was extracted from the PEDW database in August 2019. The clinical coding section of the APC Data Quality Status report advises that five organisations (ABM, BCU, Cardiff & Vale, Powys and Velindre) met both clinical coding completeness targets. The other three met the national standard of 95% coded within 3 months of episode end date but failed to achieve the 98% target for rolling 12 months' data - Cwm Taf (94.1%), Hywel Dda (94.6%) and Aneurin Bevan with only 89.6.% records being complete.

Treatment specialty re-coding: From April 2016, new codes were introduced for describing specialties to add more detail to data collections. Currently, not all health boards are reporting this data consistently using the more detailed codes. For this publication, treatment specialties have been recoded as their previous description to avoid inconsistent reporting.

Assessment Unit Activity: Assessment and clinical decision units are often used as a potential alternative to admission, however, the configuration of these units within health boards along with current national data standards can result in this activity being recorded as admitted inpatient records. In addition to this, there is variation in the way that Local Health Boards (LHBs) report assessment unit activity and for this reason, it is difficult to identify. It is advised that care should be taken when comparing activity that may include Assessment Unit activity with other Health Boards and with previous years. This mainly affects emergency and maternity inpatient admissions and may also have an effect on length of stay and bed days.

Publication Links

- PEDW Data on-line [Notes and definitions](#)
- [2018/19 Data Quality Report](#)
- [NHS Wales Data Dictionary](#)

Trends

Charts 1 and 2 have been included to provide an indication of the trend for some of the key facts noted above (2014-15 to 2018-19). Data for years other than the latest year have been taken from previous publications.

Chart 1: Number of FCEs and admission episodes 2014-15 to 2018-19

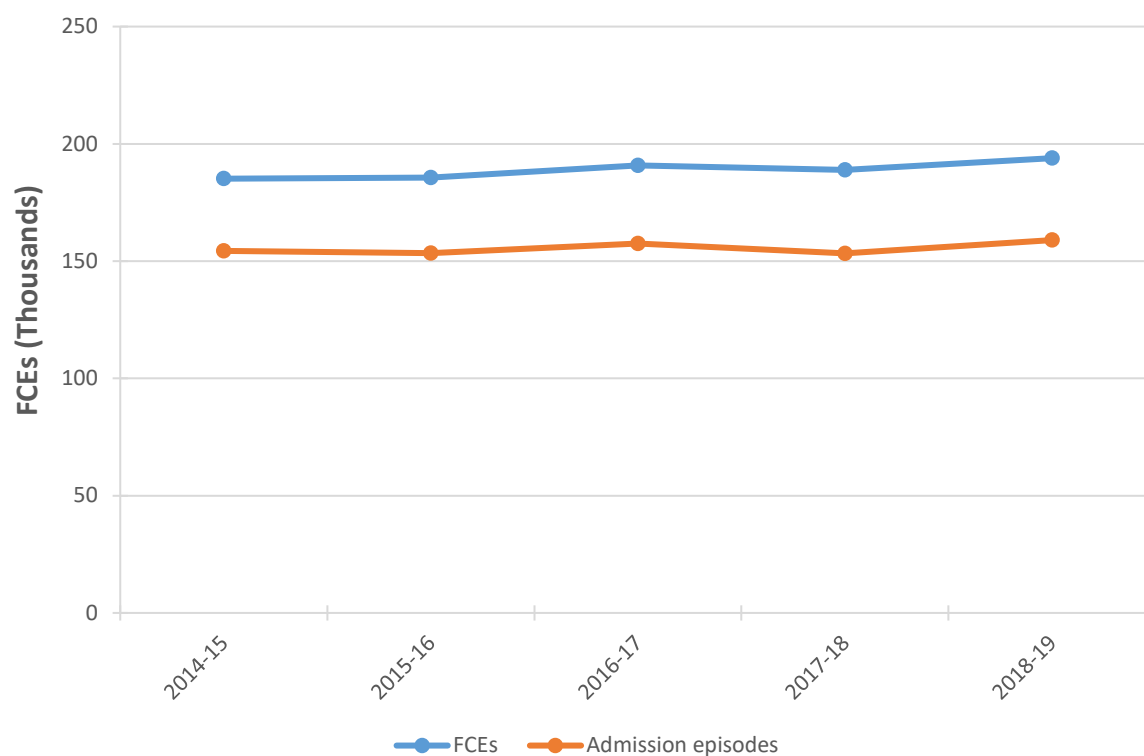


Chart 1 shows the volume of episodes and admission episodes each year. Admission episodes are the first episode within a spell of care. FCEs and admission episodes have remained relatively stable over the last five years with an overall increase in FCEs (4.7%) and in admission episodes (3%) from 2014-15 – 2018-19.

Chart 2: Number of admission episodes by admission method 2014-15 to 2018-19

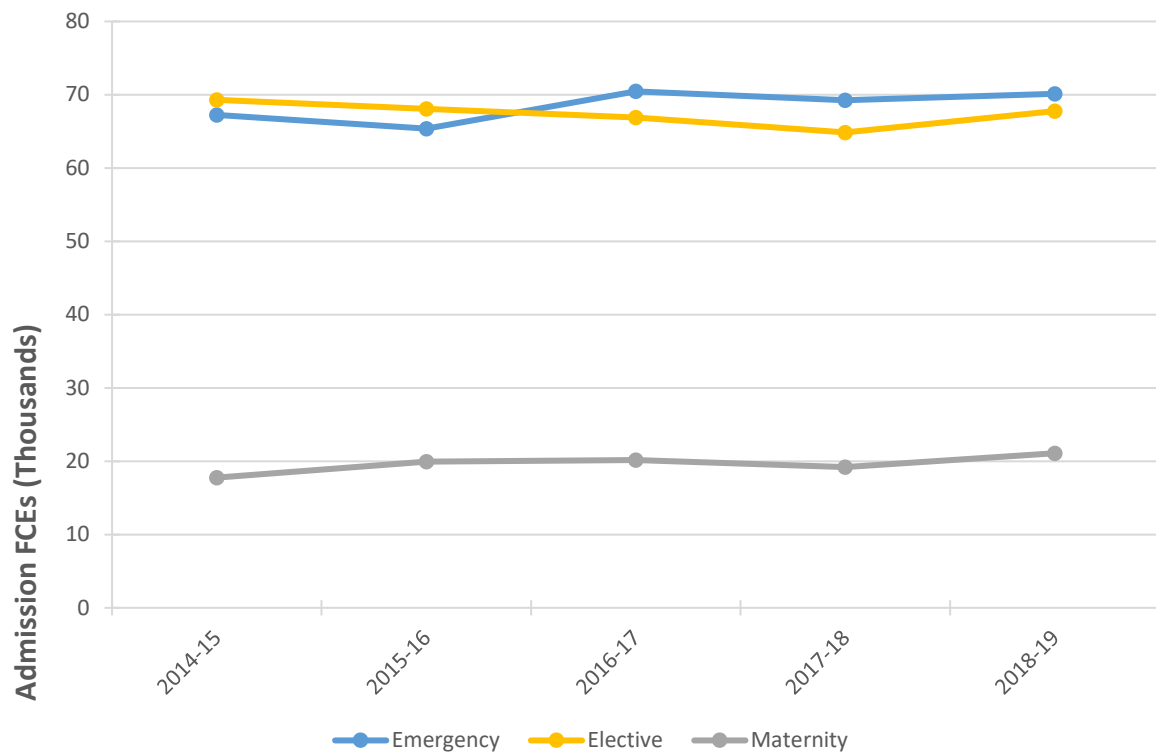


Chart 2 shows the volume of admission episodes split by admission method over time. Emergency admissions make up the majority of admissions (44.1% in 2018-19) and overall there has been a 4.3% rise over five years. Elective admissions have shown a general decrease in activity from 2014-15 but were up by 4.5% in 2018-19. Maternity admissions increased by 9.9% this year and are 18.7% higher in 2018-19 compared to 2014-15.

HEADLINE FIGURES

PEDW Statistics - Data for the period 1st April 2018 to 31st March 2019

NHS Hospital Admitted Patients - Abertawe Bro Morgannwg University Health Board Provider

Finished Consultant Episodes - FCEs (excl. Regular Attender episodes)

Total	193,891	100.0%
Proportion of the above episodes with a procedure or intervention:	53.6%	

FCEs by Patient Classification

Inpatient FCEs	143,436	74.0%
Proportion of the above episodes with a procedure or intervention:	39.5%	
Day Case FCEs	50,455	26.0%
Proportion of the above episodes with a procedure or intervention:	94.0%	
Mothers Using Delivery Facilities Only: FCEs	-	0.0%
Patient Classification Unknown: FCEs	0	0.0%

FCEs by Patients' Age

0 - 4	12,391	6.4%
5 - 14	6,563	3.4%
15 - 24	14,412	7.4%
25 - 44	39,496	20.4%
45 - 64	41,570	21.4%
65 - 74	31,946	16.5%
75 - 84	30,788	15.9%
85 & Over	16,725	8.6%
Not known	0	0.0%

FCEs and Average Bed days by Broad Specialty Groups (the specialty under which the patient is treated¹)

	FCEs	Bed days
All Specialties	143,436	4.8
All Non-Psychiatric Specialties Excluding Geriatrics	139,055	3.4
All Non-Psychiatric Specialties	141,432	3.8
All Psychiatric Specialties	2,004	76.2
Acute	116,716	3.9
Maternity	22,339	0.8
Geriatrics	2,377	24.9
Mental Illness	1,943	71.7
Learning Disability	61	221.5

Private Patients Treated in NHS Hospitals

FCEs (all patient classifications)	182	0.1%
------------------------------------	-----	------

Delivery Episodes²

FCEs: Mothers giving birth (all patient classifications)	5,181	2.7%
----------------------------------------------------------	-------	------

FCEs in Spell Breakdown

1 episode only	86.4%
2 episodes	9.1%
3 episodes	2.8%
4 or more episodes	1.8%

Admission Episodes (only the first episode of care in each hospital stay is counted).

Total			158,962	100.0%
	Inpatient	Daycase		
Elective admission episodes	17,375	50,383	67,758	42.6%
Waiting List	11,579	42,960	54,539	
Booked	621	1,881	2,502	
Planned	713	5,542	6,255	
Other Elective Admissions (transfers)	4,462	0	4,462	
Emergency admission episodes			70,116	44.1%
A&E			31,612	
GP			26,680	
Other Emergency			11,824	
Other admission episodes (including maternity)			21,088	13.3%

Discharge Episodes (only the last episode of care in each hospital stay is counted)

Total	159,157	100.0%
Deaths in hospital (including stillbirths)	3,103	1.9%

Discharge Episodes (inpatients only) and Average Length of Stay by Broad Specialty Groups (the specialty under which the patient is treated¹)

	Elective		Emergency		Other ³		All Admissions	
	FCEs	LOS	FCEs	LOS	FCEs	LOS	FCEs	LOS
All Specialties	17,413	13.4	70,273	6.4	21,088	1.2	108,774	6.5
All Non-Psych Spec. excl. Geriatrics	15,999	7.3	67,900	4.9	21,088	1.2	104,987	4.5
All Non-Psychiatric	16,879	8.9	68,878	5.4	21,088	1.2	106,845	5.1
All Psychiatric Specialties	534	157.0	1,395	58.8	0	-	1,929	86.0
Acute	15,826	7.3	67,770	4.9	661	11.2	84,257	5.4
Maternity	173	2.5	130	1.9	20,427	0.9	20,730	0.9
Geriatrics	880	38.0	978	34.6	0	-	1,858	36.2
Mental Illness	522	149.8	1,346	55.1	0	-	1,868	81.6
Learning Disability*	12	472.9	49	159.9	0	-	61	221.5

Non-Welsh Residents Treated in Abertawe Bro Morgannwg ULHB

FCEs	1,055	0.5%
Admission Episodes	807	0.5%

***Regular Day and Night Attender Episodes (these episodes have not been included elsewhere)**

Total	19,678
--------------	---------------

[1] In publications prior to 2012/13, the consultants main specialty was used for all specialty figures in the headlines publication. From 2012/13, to comply with current best practice and to match other publications, this was changed to the specialty under which the patient was treated. This means that specialty figures prior to 2012/13 will not be comparable to specialty figures provided for 2012/13 onwards in the headlines publication. Please refer to the NHS Wales data dictionary <http://www.datadictionary.wales.nhs.uk> for definitions.

[2] Please note that the definition for delivery episodes changed from the 2012/13 publication onwards, therefore the data will not be comparable to previous years. Please see the Notes and Definitions document accompanying this release for further information.

[3] Other refers to any other type of admission method other than elective or emergency (includes maternity admissions).

Please note percentage breakdowns may not always add up due to rounding.

* 1 patient has been recorded with an exceptionally long LOS of > 2,000 days.

**Calculated values such as average length of stay or average beddays are not provided where based on less than 10 values

	Finished Episodes	Admissions	Male	Female	Emerg	Waiting List	Waiting Time		Length of Stay		Mean Age	Inpatient	Day Case
							Mean	Median	Mean	Median			
Procedures (main)													
Cataract	4,885	4,885	43%	57%	0%	99%	122.7	97.0	1.4	1.0	75	1%	99%
Upper digestive tract	7,721	6,736	48%	52%	6%	89%	47.1	34.0	10.3	4.0	61	22%	78%
Heart (CABG)	394	217	80%	20%	7%	78%	100.5	91.0	17.3	13.0	70	-	1300%
Heart (PTCA)	1,441	725	73%	27%	67%	25%	169.6	134.0	3.4	2.0	66	92%	8%
Hip	1,257	1,222	39%	61%	38%	60%	359.0	346.0	9.4	4.0	73	100%	0%
Knee	765	761	761	44%	2%	96%	400.9	397.0	4.0	3.0	70	99%	1%
Kidney transplant	-	-	-	-	-	-	-	-	-	-	-	-	-
Diagnosis (anywhere in admitting episode)													
Sepsis	3,539	1,875	52%	48%	71%	2%	71.4	25.0	16.9	8.0	62	100%	0%