

Subject(s):	<i>Appendix B – Patient Classification (Inpatients/Daycases)</i>
Approval Status:	<i>This DDCN was approved by the DSCN Sub-Group on the 5th March 2013.</i>
Data Dictionary Version:	4.3
Reference Number:	<i>DDCN 2013 / 06</i>
Version Number:	6
Publication Date:	<i>1st May 2013</i>
Relevant DSCN(s):	<i>N/A</i>

Reason for Change

As part of ongoing work to improve the content of the dictionary, this is one of a series of DDCNs to remove the Appendices section from the NHS Wales Data Dictionary, which involves moving the sections elsewhere or removing altogether.

This DDCN relates to 'Appendix B – Patient Classification (Inpatients/Daycases)'.

Description of Change

To move section 'Appendix B – Patient Classification (Inpatients/Daycases)' to the Data Item 'Patient Classification'.

Data Dictionary Version

Where applicable, this DDCN reflects changes introduced by DDCN and/or DSCN since the release of version 4.2 of the NHS Wales Data Dictionary.

The changes introduced by such DDCNs will be published in version 4.3 of the NHS Wales Data Dictionary.

Section 1: Table reflecting areas that are impacted as a result of this DDCN

The following table shows all parts of the dictionary, including data sets, data items, terms and other associated areas that are linked with the changes documented within this DDCN.

Each dictionary section and data definition type is listed in alphabetical order and is shown in the sequence in which it appears in this DDCN.

Data Definition Type	Name	New/Retired/Changed	Page Number
Appendices	Appendices	Retired	3
Appendix B	Appendix B – Patient Classification (Inpatients/Daycases)	Retired	4
Data Item	Patient Classification	Changed	5

Section 2: Highlighted changes to be made to the NHS Wales Data Dictionary

Changes to the NHS Wales Data Dictionary are detailed below, with new text being highlighted in **blue** and deletions are shown with a **strikethrough**.

The text shaded in **grey** shows existing text copied from the NHS Wales Data Dictionary.

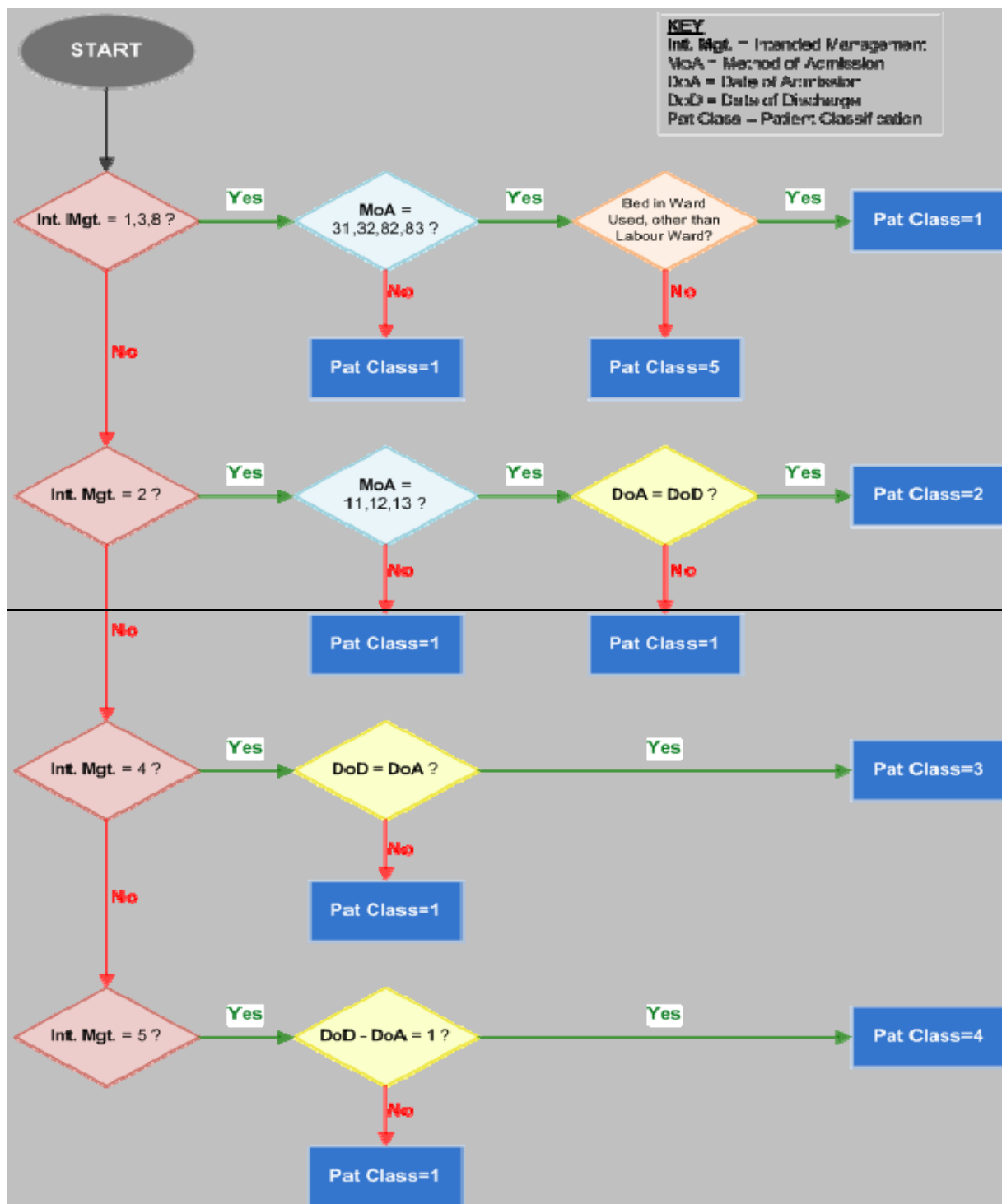
Changes to existing Appendices

Appendices

~~Appendix B – Patient Classification (Inpatients/Daycases)~~

Changes to Appendix B – Patient Classification (Inpatients/Daycases)

Appendix B – Patient Classification (Inpatients/Daycases)



The flowchart shows the derivation of Patient Classification from method of admission, intended management, ward used and actual duration of stay in a hospital bed. The one exception is for any episode in a day case spell that is not the final episode. For these episodes, which should be rare, the patient classification will be 'ordinary admission' rather than 'day case admission'. The last episode in this spell will have the correct value of 'day case' admission.

Changes to Data Items (A-Z)

Patient Classification

Change History	
DDCN 2013 / AA	The Removal of Appendix B – Patient Classification (Inpatients/Daycases)
DSCN (2008) 07 (W)	The Introduction of Valid Period Date Ranges for Data Items within the APC Data Set
DSCN 04/01 (W)	Data Standards: Minor Changes and Corrections

This data item is / was included in the following data sets / collections between the dates shown:

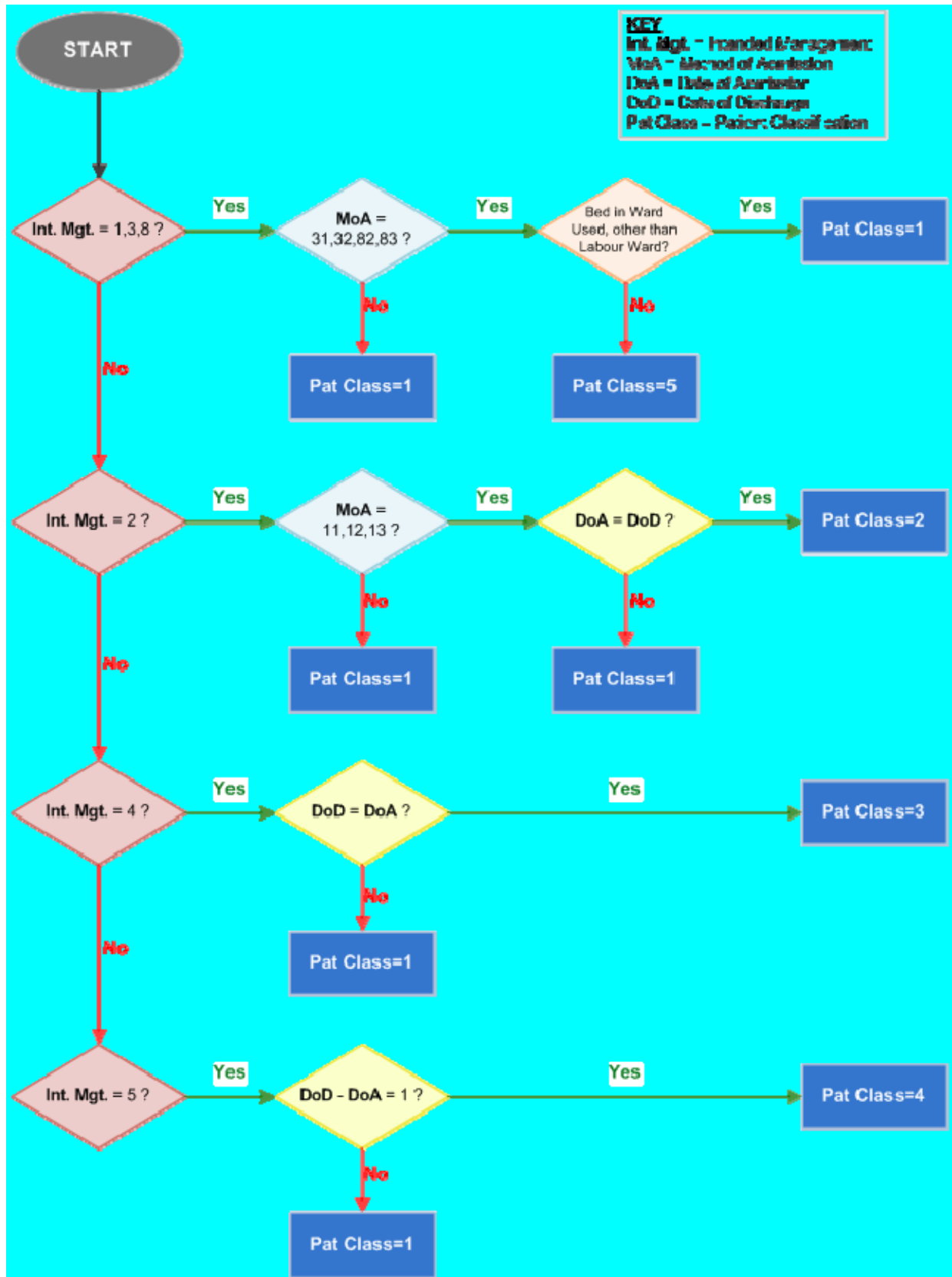
Data Set / Collection	Valid From	Valid To
APC ds99	1 st April 1999	

A coded classification of [Patients](#) who have been admitted to a [Hospital Provider Spell](#), derived by combining data items on the patient administration systems, namely [Admission Method](#), [Intended Management](#) and ward use with actual duration of stay in a hospital bed. The duration of stay is derived by subtracting the date of admission from the date of discharge.

In the case of maternity patients, the use being made of the delivery facilities is also used in the derivation.

Format: 1 digit numeric

Value	Meaning	Valid From	Valid To
1	Ordinary admission	Pre 28 th December 1995	
2	Day case admission	Pre 28 th December 1995	
3	Regular day admission	Pre 28 th December 1995	
4	Regular night admission	Pre 28 th December 1995	
5	Women using delivery facilities only	Pre 28 th December 1995	
8	<i>Not applicable</i>	1 st May 1998	20 th January 2002



The flowchart shows the derivation of Patient Classification from method of admission, intended management; ward used and actual duration of stay in a hospital bed. The one exception is for any episode in a day case spell that is not the final episode. For these episodes, which should be rare, the patient classification will be 'ordinary admission' rather than 'day case admission'. The last episode in this spell will have the correct value of 'day case' admission.

Additional Information:

Please address enquiries about this DDCN to: -

*Data Standards Team
NHS Wales Informatics Service
14th Floor - Brunel House
2 Fitzalan Road
Cardiff
CF24 0HA*

Tel: 029 2050 2539

Fax: 029 2050 2504

E-mail: data.standards@wales.nhs.uk

You can find changes made to the NHS Wales Informatics Service Data Dictionary via the following link: <http://www.datadictionary.wales.nhs.uk/>